

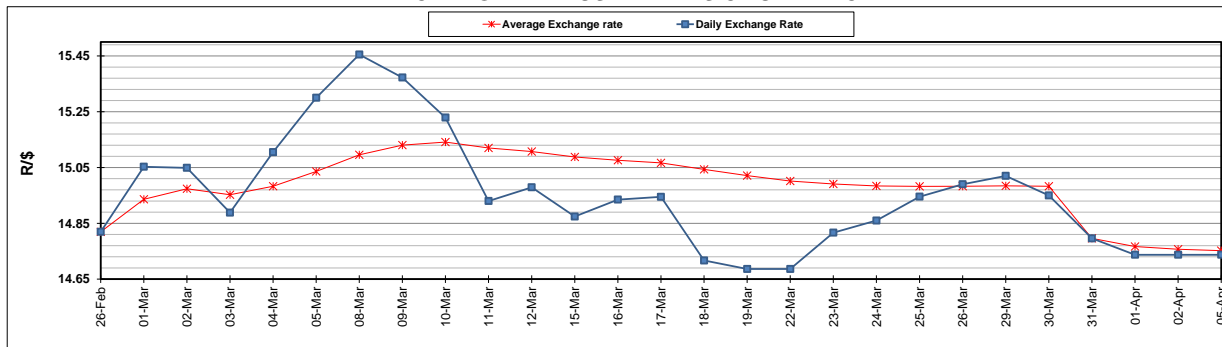
	PETROL 95 ULP	PETROL 93 ULP & LRP	DIESEL 0.05%	DIESEL 0.005%	ILL. PAR.
GAUTENG PUMP PRICE (SA c/l) AS FROM 07/04/2021	1,732.000	1,710.000	-	-	-
WHOLESALE PRICE (SA c/l) AS FROM 07/04/2021	-	-	1,477.620	1,480.020	880.488
SINGLE NATIONAL MAXIMUM RETAIL PRICE	-	-	-	-	1,106.000
BASIC FUEL PRICE - 05/04/2021 (SA c/l)	719.592	703.415	642.800	645.400	625.131
PRESS RELEASE CONTRIBUTION TO BFP 31/03/2021 - 05/04/2021 (SA c/l)	665.170	658.170	653.630	658.030	633.128
UNIT OVER/(UNDER) RECOVERY - 05/04/2021 (SA c/l)	(54.422)	(45.245)	10.830	12.630	7.997
AVERAGE BASIC FUEL PRICE 31/03/2021 - 05/04/2021	719.445	703.682	639.823	642.366	622.790
AVERAGE UNIT OVER/(UNDER) RECOVERY 31/03/2021 - 05/04/2021	(54.275)	(45.512)	13.807	15.664	10.338

ANALYSIS MOVEMENT OF AVERAGE OVER/(UNDER) RECOVERY

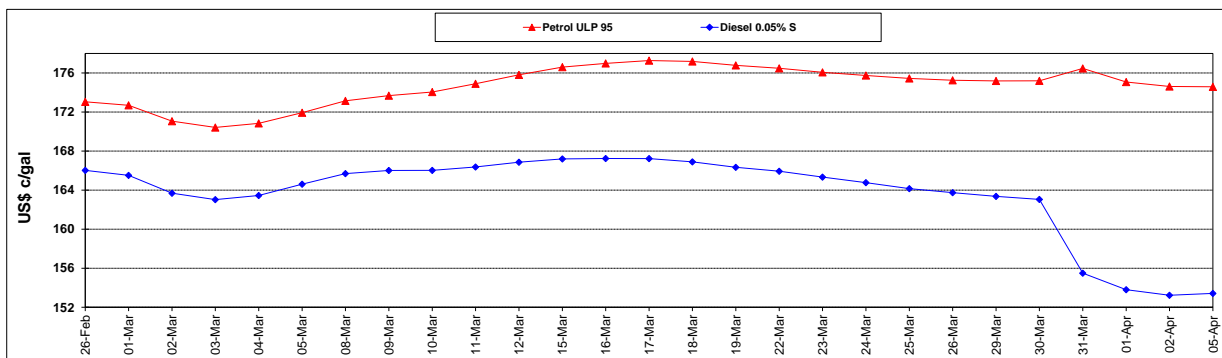
	PETROL 95	PETROL 93	DIESEL 0.05%	DIESEL 0.005%	ILL. PAR.
- MOVEMENT IN INTERNATIONAL PRODUCT PRICES	(65.536)	(56.526)	3.792	5.610	0.590
- MOVEMENT IN EXCHANGE RATE	11.261	11.014	10.015	10.054	9.748
AVERAGE UNIT OVER/(UNDER) RECOVERY 31/03/2021 - 05/04/2021	(54.275)	(45.512)	13.807	15.664	10.338

R/\$ EXCHANGE RATE - (R/\$14.7373 - 05/04/2021)

EXCHANGE RATE USED IN BASIC FUEL PRICE



INTERNATIONAL PRODUCT PRICES OF BASKET USED IN BASIC FUEL PRICE



BASIC FUEL PRICE IN SA CENTS PER LITRE

